

# **Acceptable Risk in a Disaster Context**

**David Skegg (SMEF)**

Life is a sexually transmitted  
disease that is invariably fatal

**Safe:** The level of risk you are prepared to accept

**Hazard:** A source of potentially damaging energy

**Risk:** The chance of unwanted outcomes

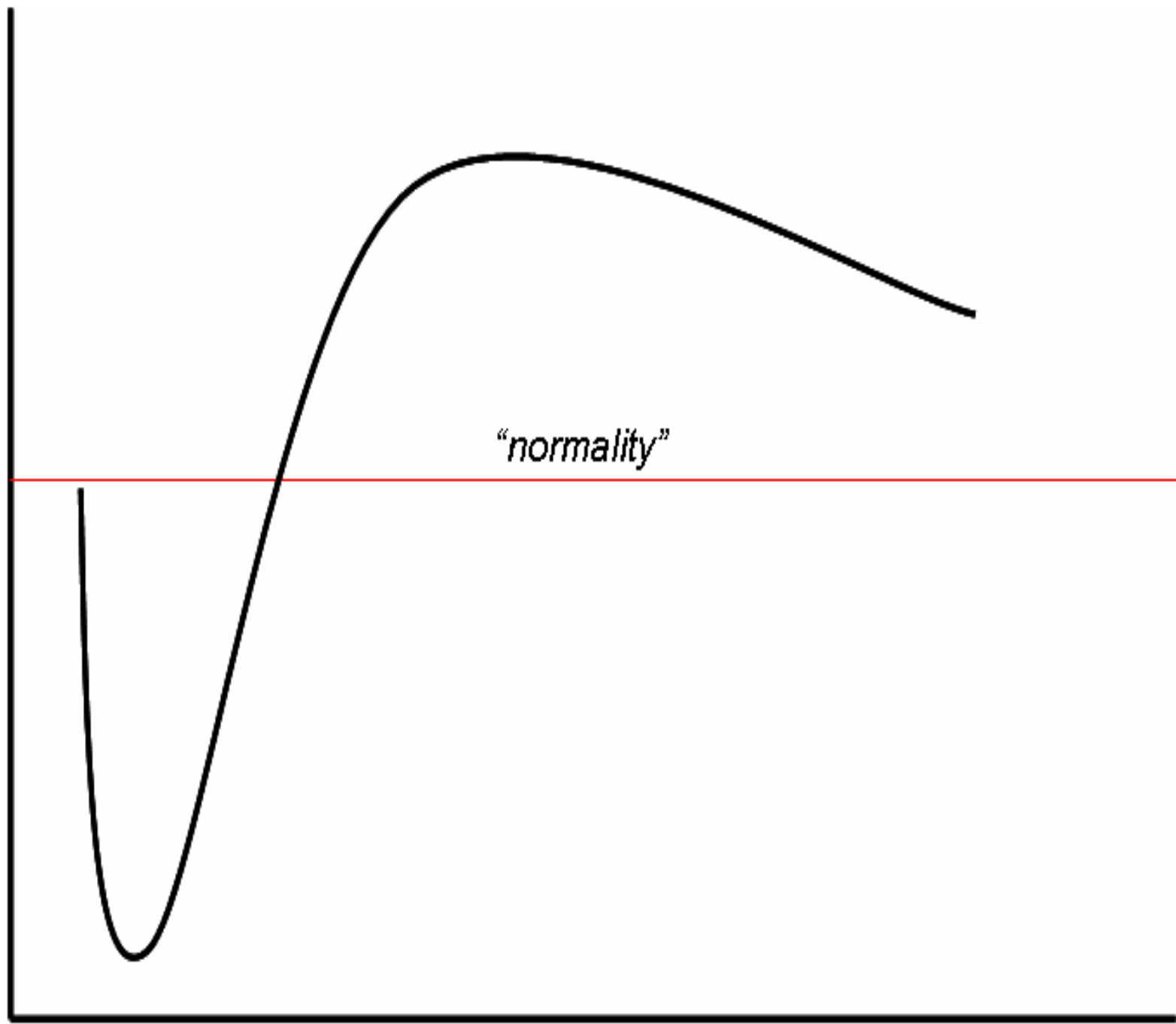
**Emergency:** An event beyond the apparent capability of immediate resources to mitigate ongoing damage

**Disaster:** An event that is beyond all available local resources to mitigate ongoing damage

Information /  
response

*"normality"*

Time



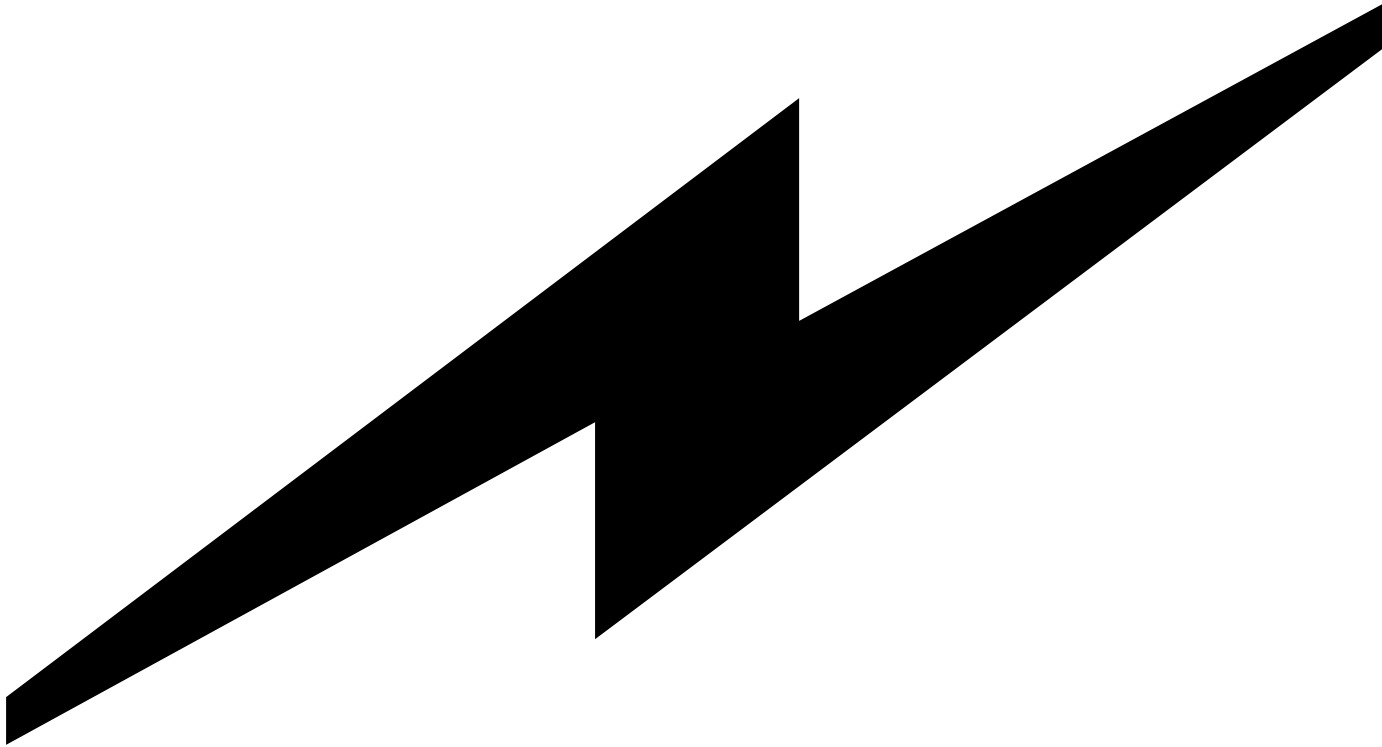




MUSCULAR



GRAVITATIONAL



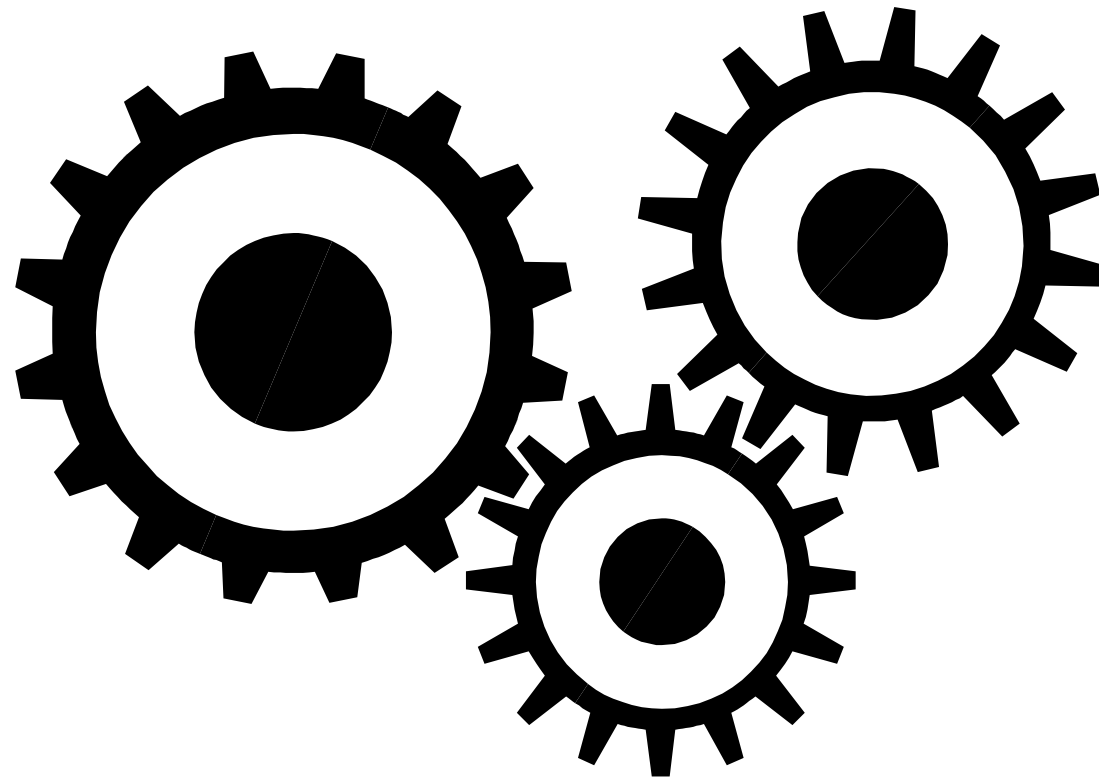
ELECTRICAL



THERMAL



CHEMICAL



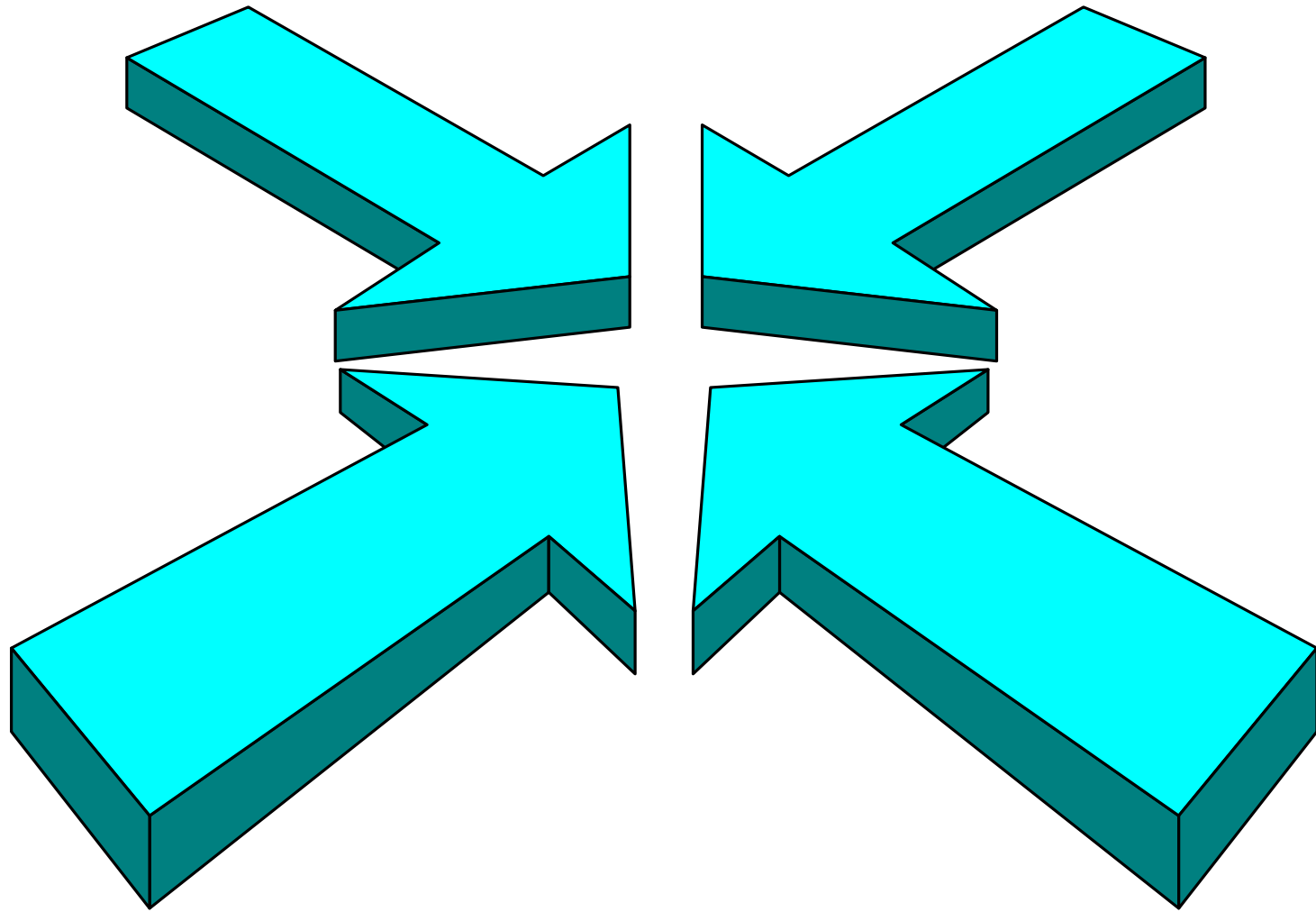
MECHANICAL POWER



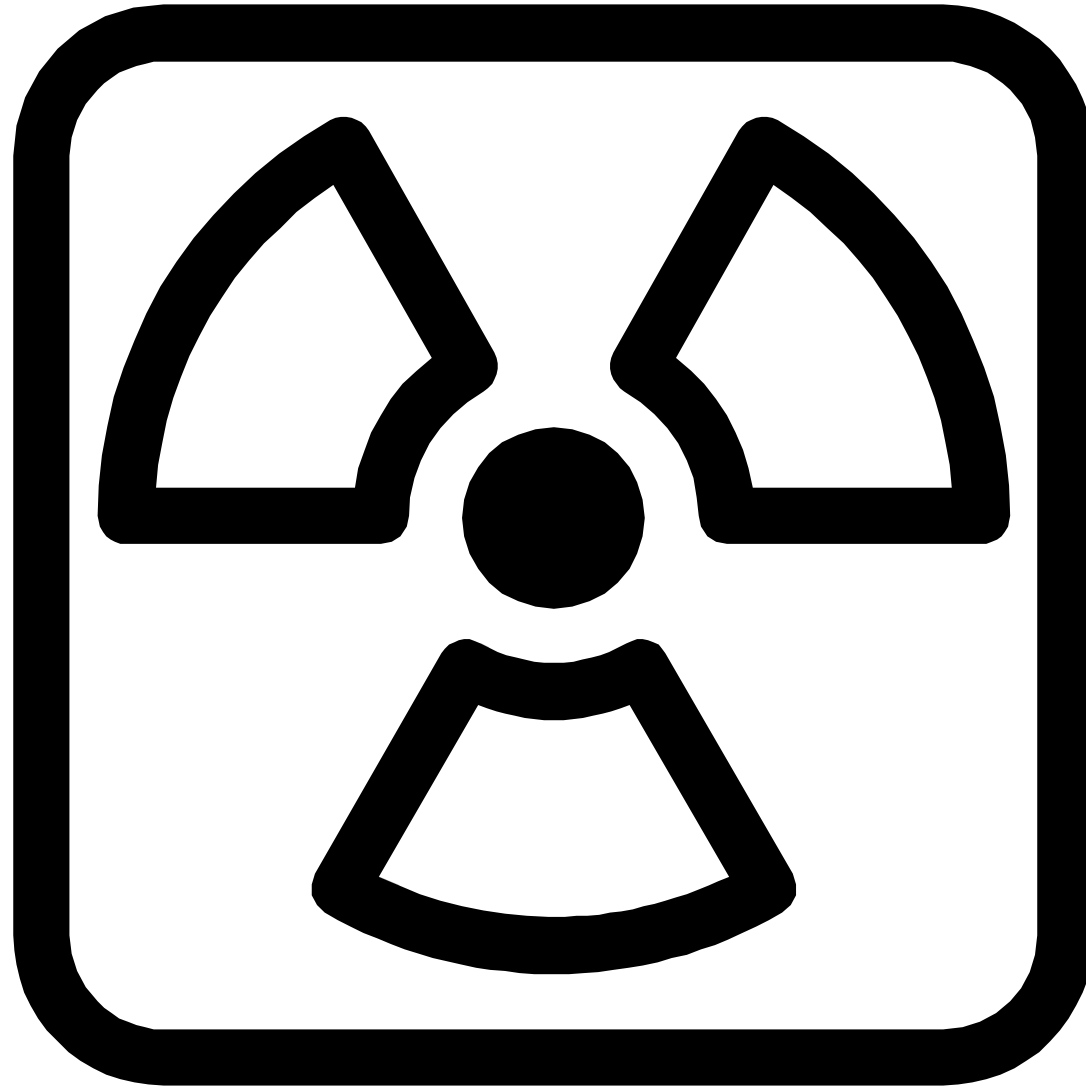
NOISE & VIBRATION



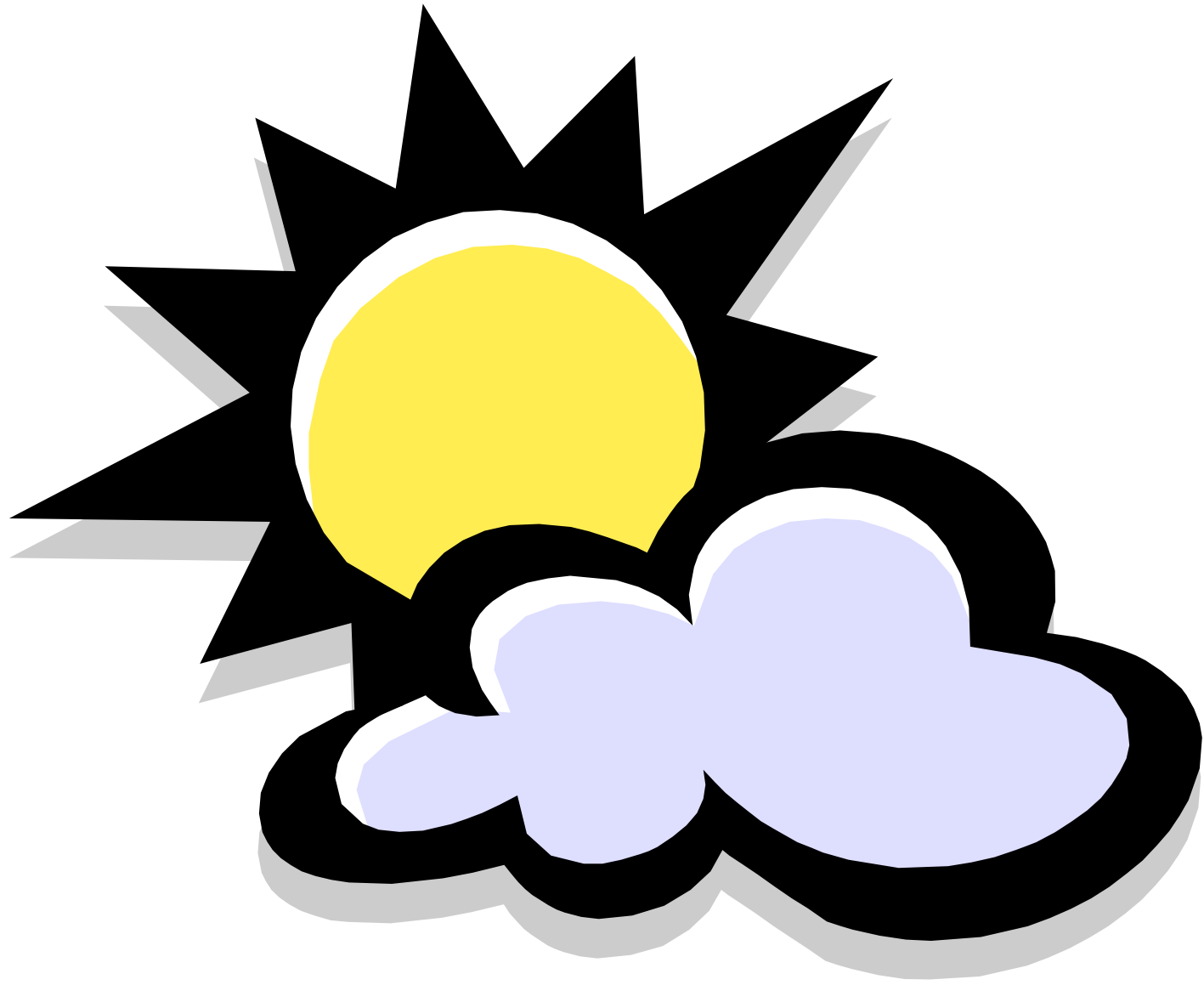




COMPRESSED FLUIDS



**RADIATION**  
(ionising and non-ionising)





**IMPORTANT**

PSYCHO-SOCIAL